

## DATA REVIEW

---

# Appendix B: Supplemental Figures

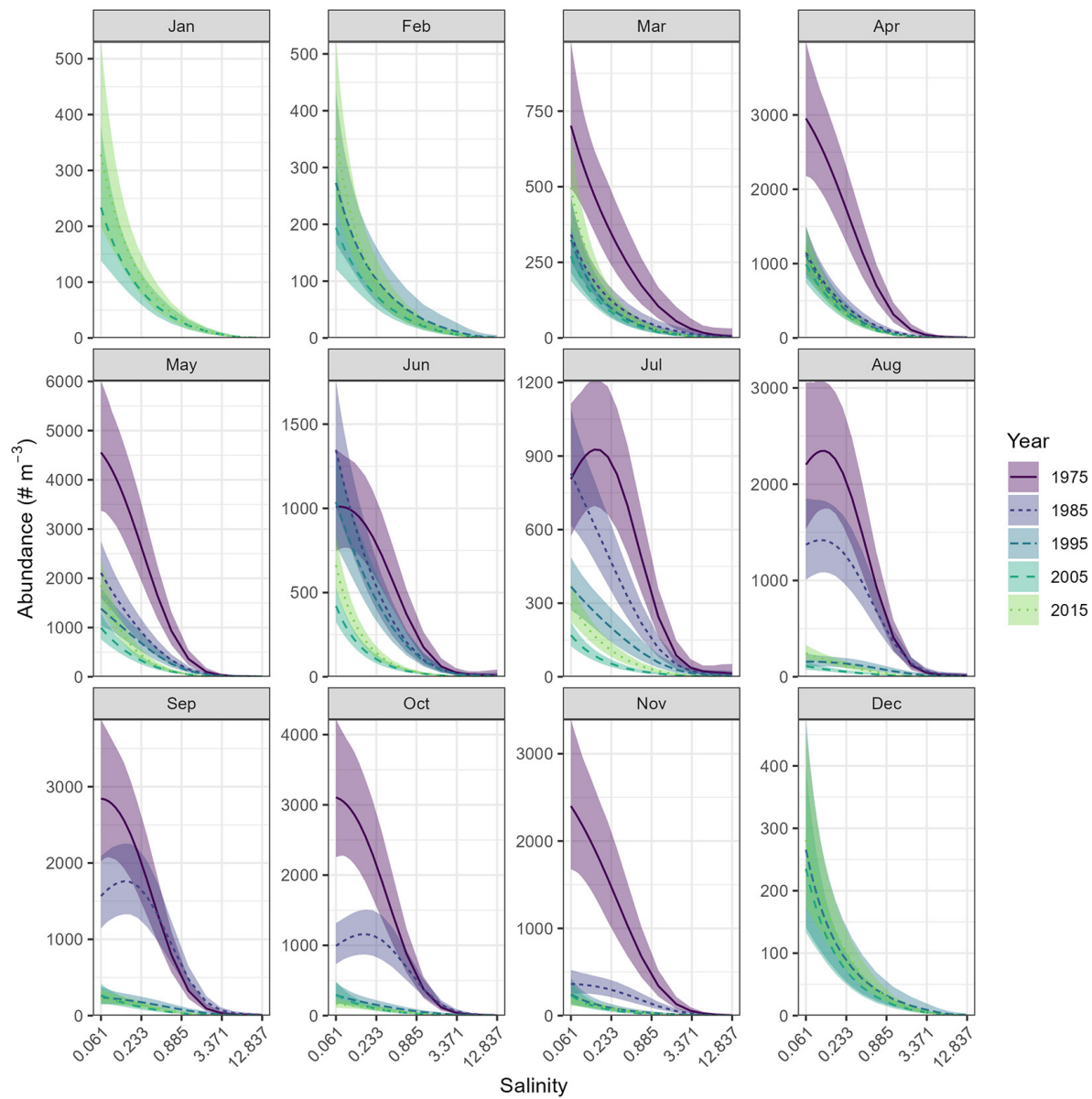
Samuel M. Bashevkin, Christina E. Burdi, Rosemary Hartman, Arthur Barros

The supplemental figures on the following pages plot the relationships of each taxon with salinity. See main paper for more context.

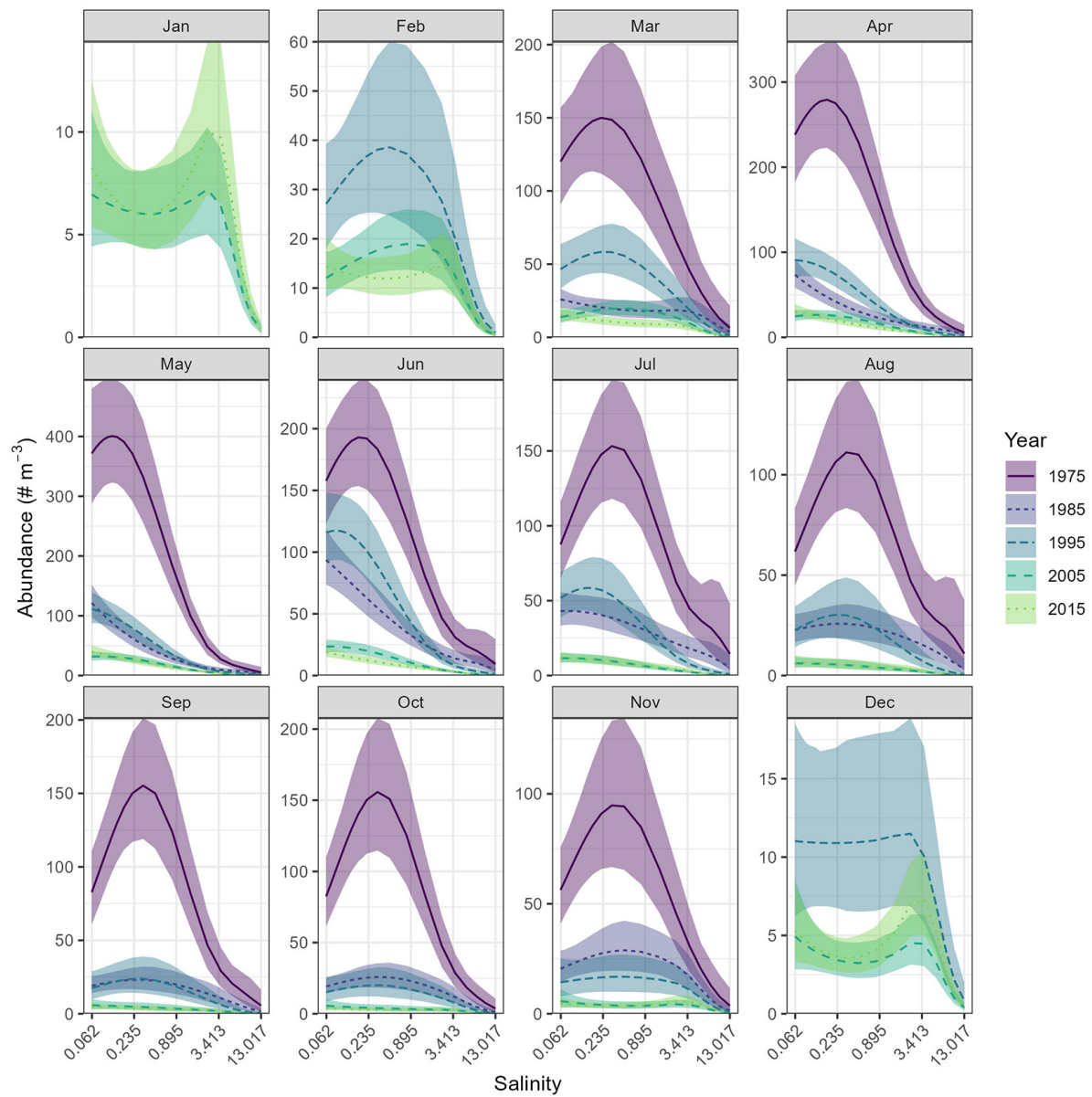
SFEWS Volume 21 | Issue 3 | Article 1

<https://doi.org/10.15447/sfew.2023v21iss3art1>

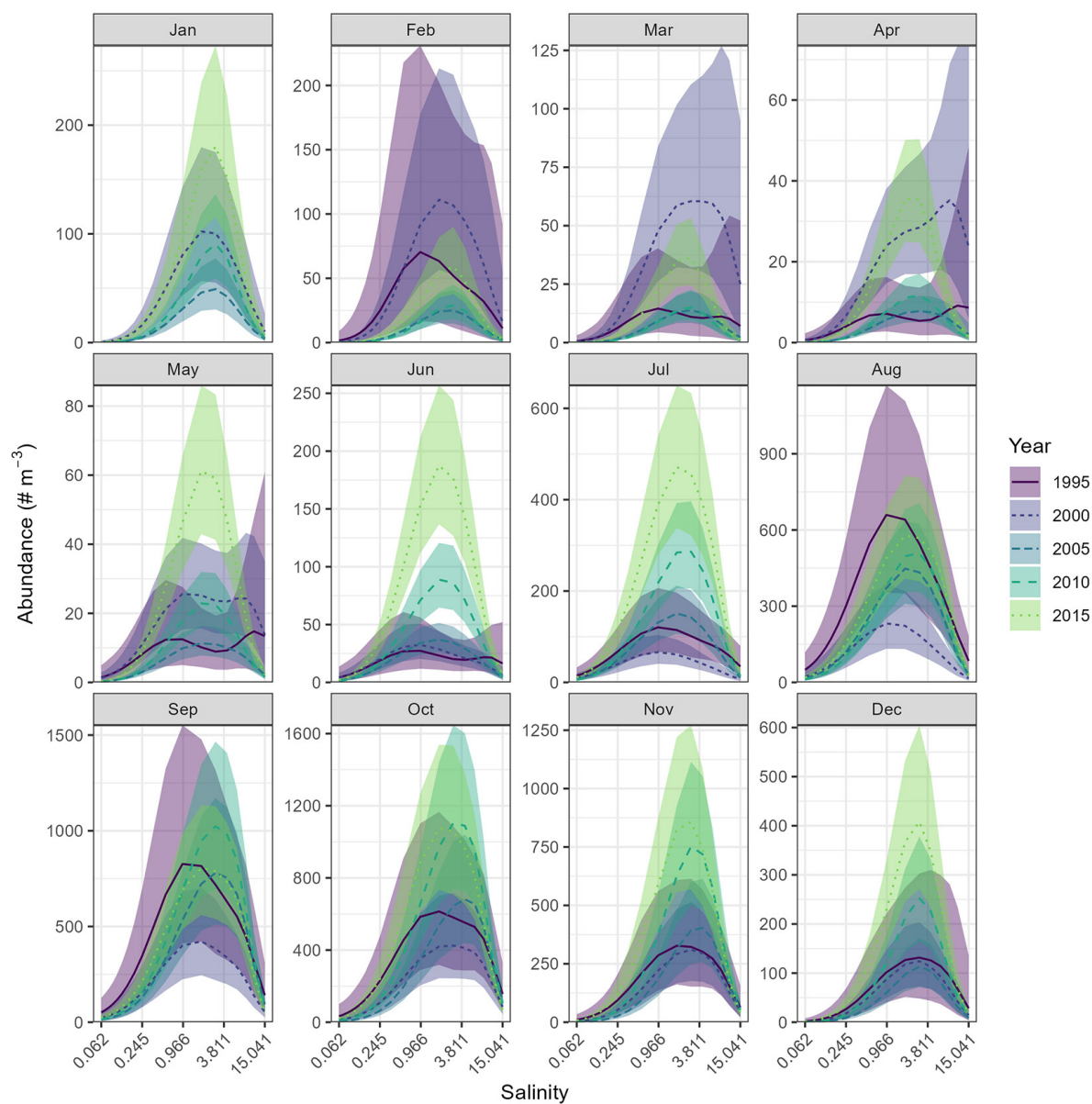
\* Corresponding author: [sam.bashevkin@waterboards.ca.gov](mailto:sam.bashevkin@waterboards.ca.gov)



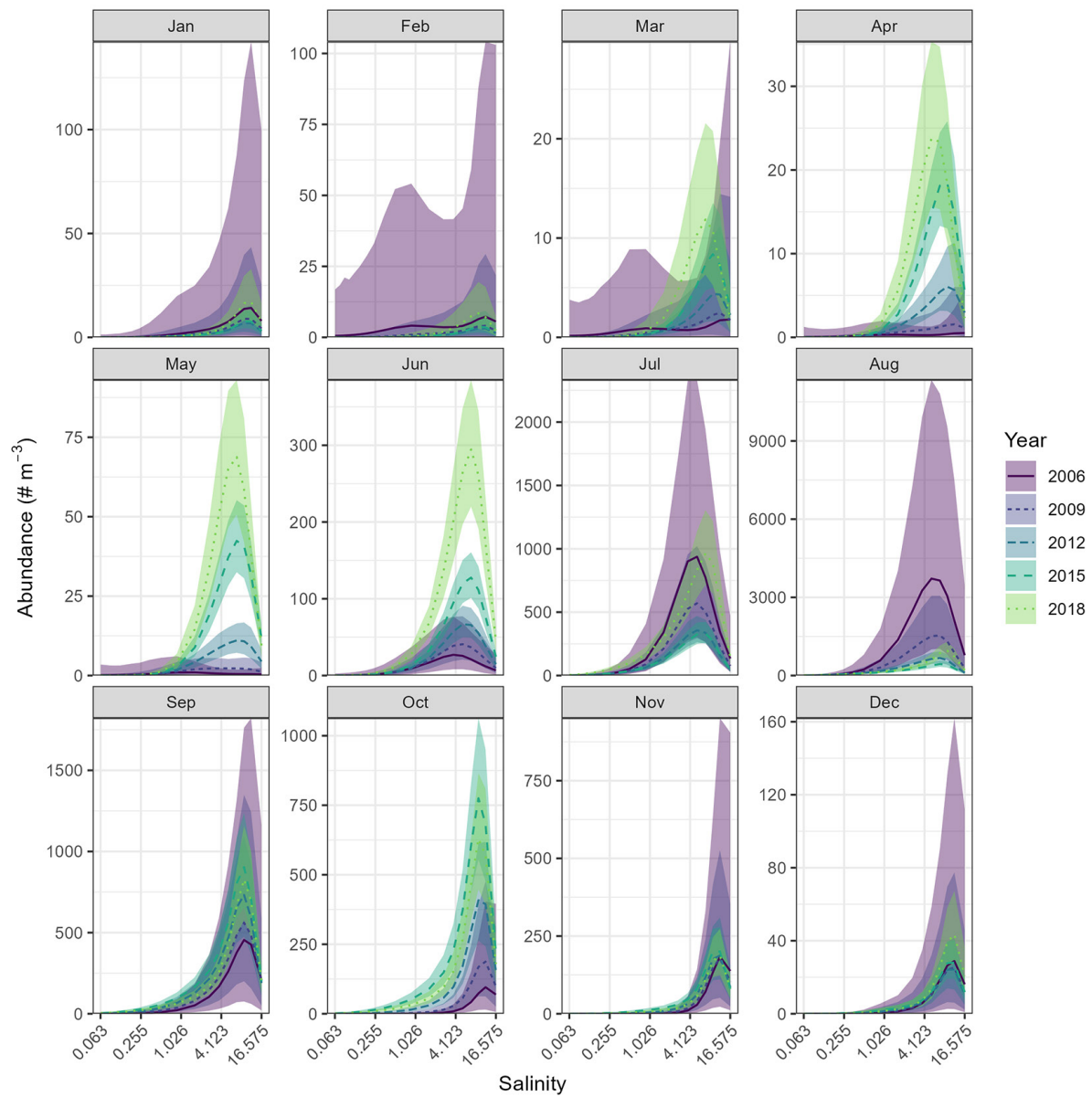
**Figure B1** The relationship between adult *Bosmina longirostris* abundance and salinity with 99% credible intervals. Each *plot* represents the pattern for a separate month. Each *line* represents predictions from different position on the smoothed yearly trend and may not represent exact conditions for that particular year. The *y*-axis limits differ among plots to facilitate seasonal comparisons. Missing values represent gaps in the raw data. Note that the *x*-axis is on the log scale. Salinity is reported on the Practical Salinity Scale.



**Figure B2** The relationship between adult *Acanthocyclops* spp. abundance and salinity with 99% credible intervals. See Figure B1 for a full description.



**Figure B3** The relationship between adult *Acartia sinensis* abundance and salinity with 99% credible intervals. See Figure B1 for a full description.



**Figure B4** The relationship between juvenile *Acartia sinensis* abundance and salinity with 99% credible intervals. See Figure B1 for a full description.